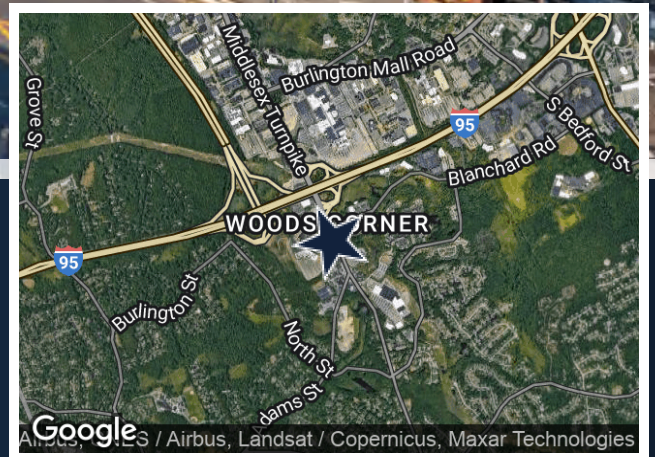
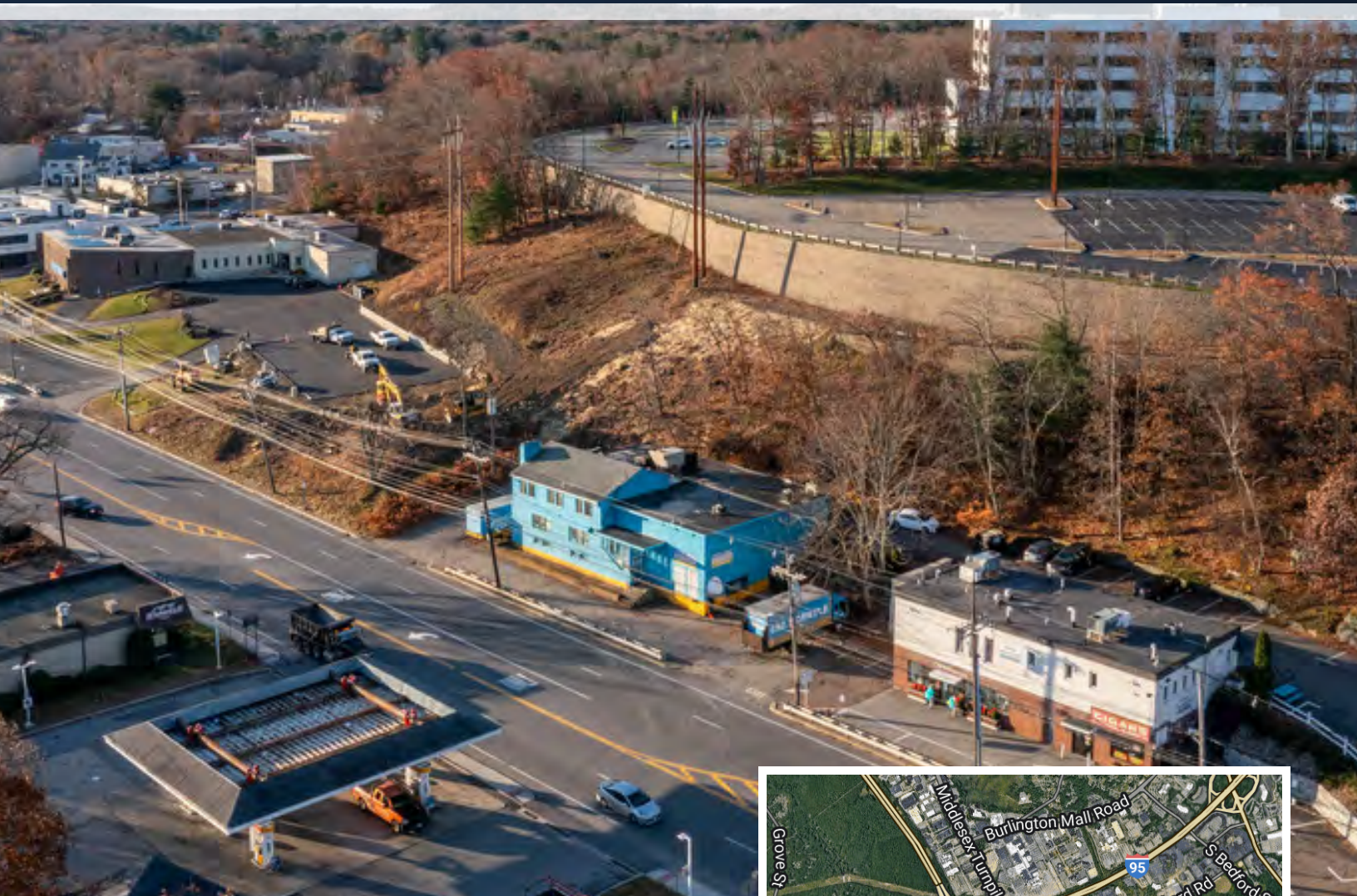


# 62 MIDDLESEX TURNPIKE

BURLINGTON, MA



## 7,056 SF

COMMERCIAL BUILDING FOR  
SALE

**CONTACT:**

DAVID STUBBLEBINE	617.592.3391	DAVID@STUBBLEBINECOMPANY.COM
JAMES STUBBLEBINE	617.592.3388	JAMES@STUBBLEBINECOMPANY.COM
CHLOE STUBBLEBINE	781.879.2543	CHLOE@STUBBLEBINECOMPANY.COM

EXCLUSIVE OFFERING



THE  
STUBBLEBINE  
COMPANY

CORFAC INTERNATIONAL



## PROPERTY SUMMARY



### PROPERTY DESCRIPTION

7,056 SF Commercial Building For Sale

### PROPERTY HIGHLIGHTS

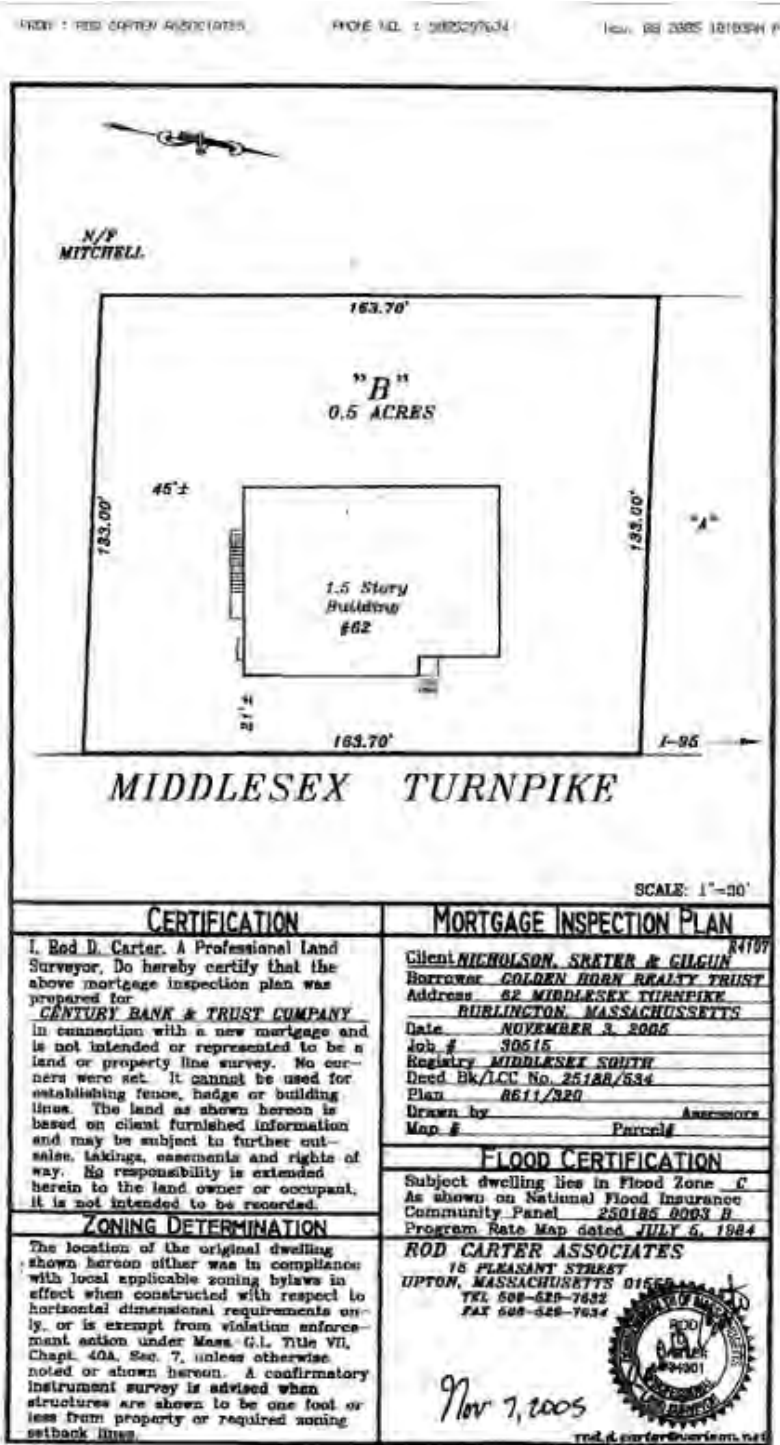
- Located minutes from the Burlington Mall and a 1+ M SF office and retail hub district
- Property offers multiple opportunities for investors, developers and retail

### OFFERING SUMMARY

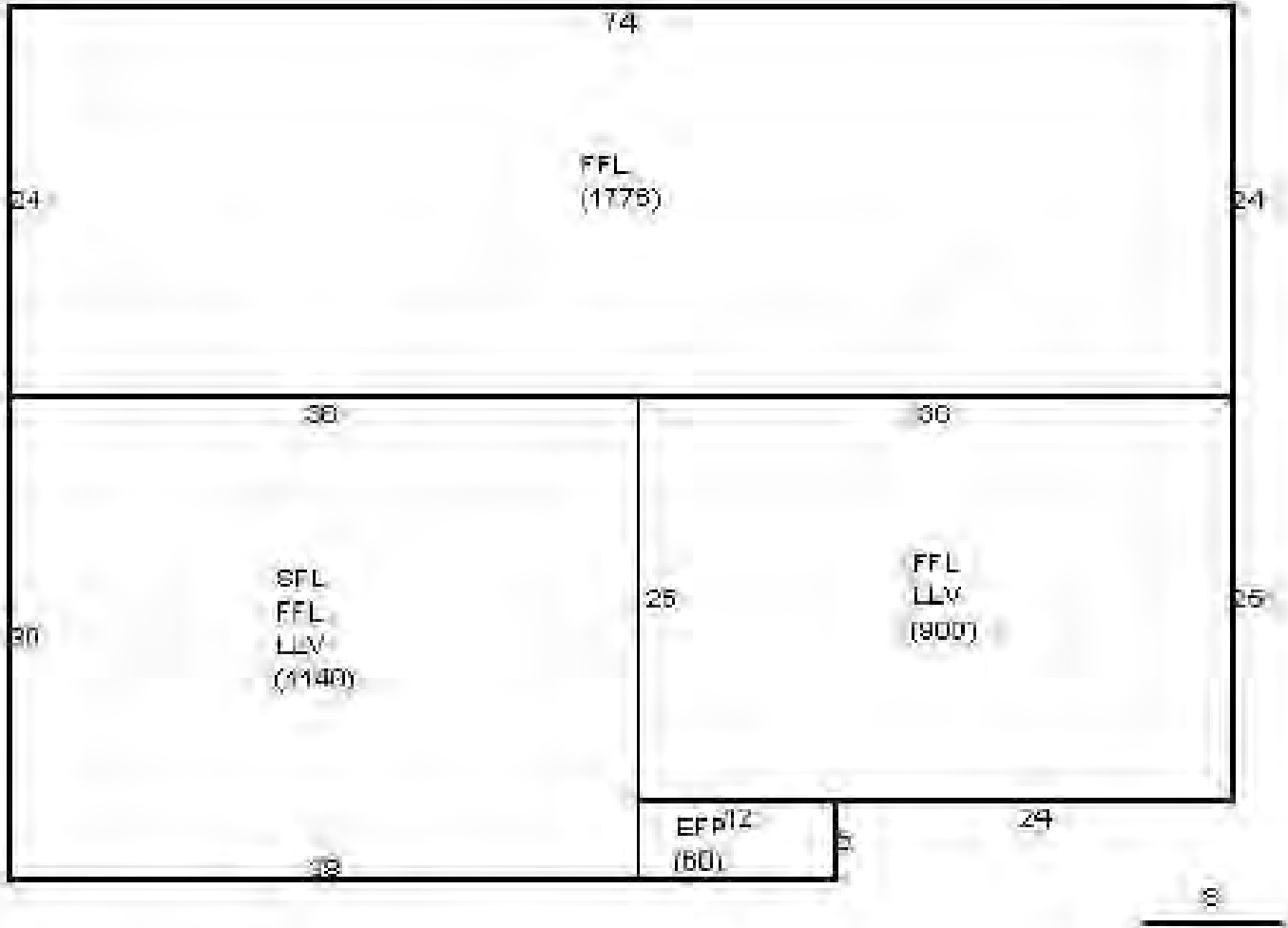
BUILDING SIZE:	7,056 SF
LOT SIZE:	0.5 Acres
ZONING:	Retail/Industrial
YEAR BUILT:	1956
FRONTAGE:	160' on Middlesex Turnpike (with 2 curb cuts)
PARKING:	7 spaces on-site
ELECTRICAL:	1200 Amps, 3-Phase
R.E. TAXES:	\$2.03/SF (2021)
SALES PRICE:	\$2,400,000

DEMOGRAPHICS	5 MILES	10 MILES
TOTAL HOUSEHOLDS	67,389	365,447
TOTAL POPULATION	175,541	926,314
AVERAGE HH INCOME	\$121,270	\$105,086

SITE PLANS

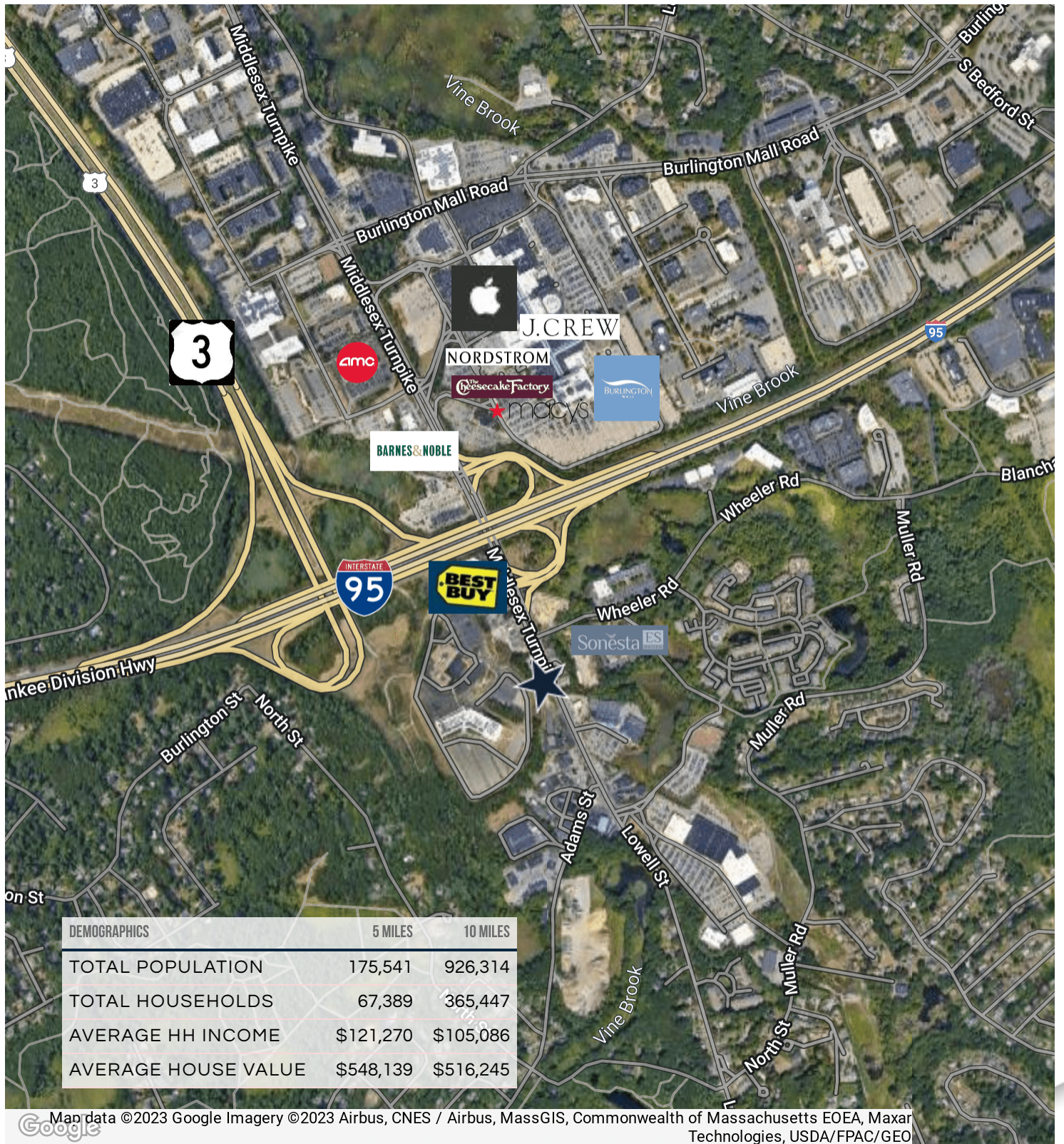


# FLOOR PLANS





LOCATION MAP





# 62 MIDDLESEX TURNPIKE

BURLINGTON, MA



## CONTACT:

DAVID STUBBLEBINE  
JAMES STUBBLEBINE  
CHLOE STUBBLEBINE

617.592.3391  
617.592.3388  
781.879.2543

DAVID@STUBBLEBINECOMPANY.COM  
JAMES@STUBBLEBINECOMPANY.COM  
CHLOE@STUBBLEBINECOMPANY.COM

EXCLUSIVE OFFERING



THE  
STUBBLEBINE  
COMPANY

CORFAC INTERNATIONAL