



# 285 CIRCUIT STREET

HANOVER, MA

10,300-16,000 SF | HIGH QUALITY INDUSTRIAL SPACE FOR LEASE

- NO COLUMNS
- TWO (2) LOADING DOCKS
- CONVENIENT SOUTH SHORE LOCATION
- 20' CLEAR CEILING HEIGHT



THE  
STUBBLEBINE  
COMPANY

CORFAC INTERNATIONAL

# PROPERTY SUMMARY



## PROPERTY DESCRIPTION

10,300 SF with two (2) loading docks and one (1) grade level door

16,000 SF with two (2) loading docks

## PROPERTY HIGHLIGHTS

- NO COLUMNS
- TWO (2) LOADING DOCKS
- CONVENIENT SOUTH SHORE LOCATION
- ONE (1) GRADE DOOR LEVEL
- 20' CLEAR CEILING HEIGHT

## OFFERING SUMMARY

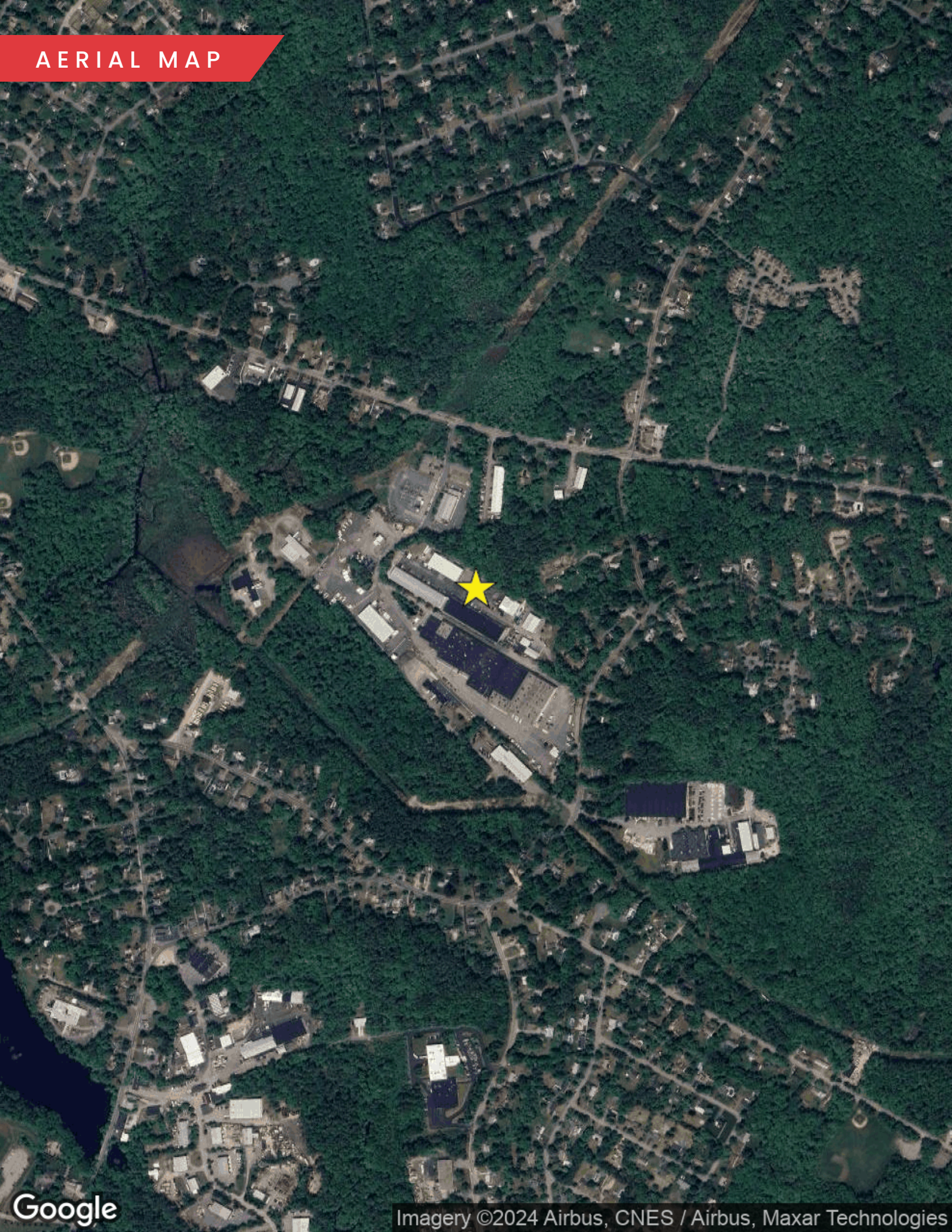
Lease Rate:	\$12.50 NNN
Available SF:	Space 1: 10,300 SF Space 2: 16,000 SF
Lot Size:	5.91 Acres
Building Size:	19,377 SF
Zoning:	Industrial
Available Amps:	400 A
Column Spacing:	Clear Span
Sprinkler:	Wet System
Water/Sewer:	Town/Septic
Heat:	Gas

DEMOGRAPHICS	3 MILES	5 MILES	10 MILES
Total Households	12,862	32,910	160,503
Total Population	35,389	88,274	427,812
Average HH Income	\$171,489	\$168,633	\$147,842

# ADDITIONAL PHOTOS



AERIAL MAP



# 285 CIRCUIT STREET

HANOVER, MA

10,300-16,000 SF | HIGH QUALITY INDUSTRIAL SPACE FOR LEASE

**CHRIS MICHNIEWICZ**  
774.994.1698  
chris@stubblebinecompany.com

**DAVID BERMAN**  
413.636.9055  
dberman@stubblebinecompany.com

**JAMES STUBBLEBINE**  
857.362.0102  
james@stubblebinecompany.com

**DAVID STUBBLEBINE**  
857.362.0101  
david@stubblebinecompany.com

We obtained the information above from sources we believe to be reliable. However, we have not verified its accuracy and make no guarantee, warranty or representation about it. It is submitted subject to the possibility of errors, omissions, change of price, rental or other conditions, prior sale, lease or financing, or withdrawal without notice. We include projections, opinions, assumptions or estimates for example only, and they may not represent current or future performance of the property. You and your tax and legal advisors should conduct your own investigation of the property and transaction.



THE  
STUBBLEBINE  
COMPANY

CORFAC INTERNATIONAL