

177 FLORENCE STREET

LEOMINSTER, MA



20,000 SF AVAILABLE

SUBDIVIDABLE

EXCLUSIVE OFFERING



THE
STUBBLEBINE
COMPANY

CORFAC INTERNATIONAL

PROPERTY SUMMARY



PROPERTY DESCRIPTION

20,000 SF INDUSTRIAL/WAREHOUSE
SPACE AVAILABLE (SUBDIVIDABLE)

PROPERTY HIGHLIGHTS

- A WELL MAINTAINED INDUSTRIAL/WAREHOUSE FACILITY
- EASY ACCESS TO ROUTE 2 AND I-190
- 3,000 - 20,000 SF AVAILABLE
- HEAVY POWER

OFFERING SUMMARY

LEASE RATE:	\$6.95/SF/Gross
AVAILABLE SF:	3,000 - 20,000 SF
LOT SIZE:	4 Acres
BUILDING SIZE:	140,000 SF

PROPERTY SPECIFICATIONS

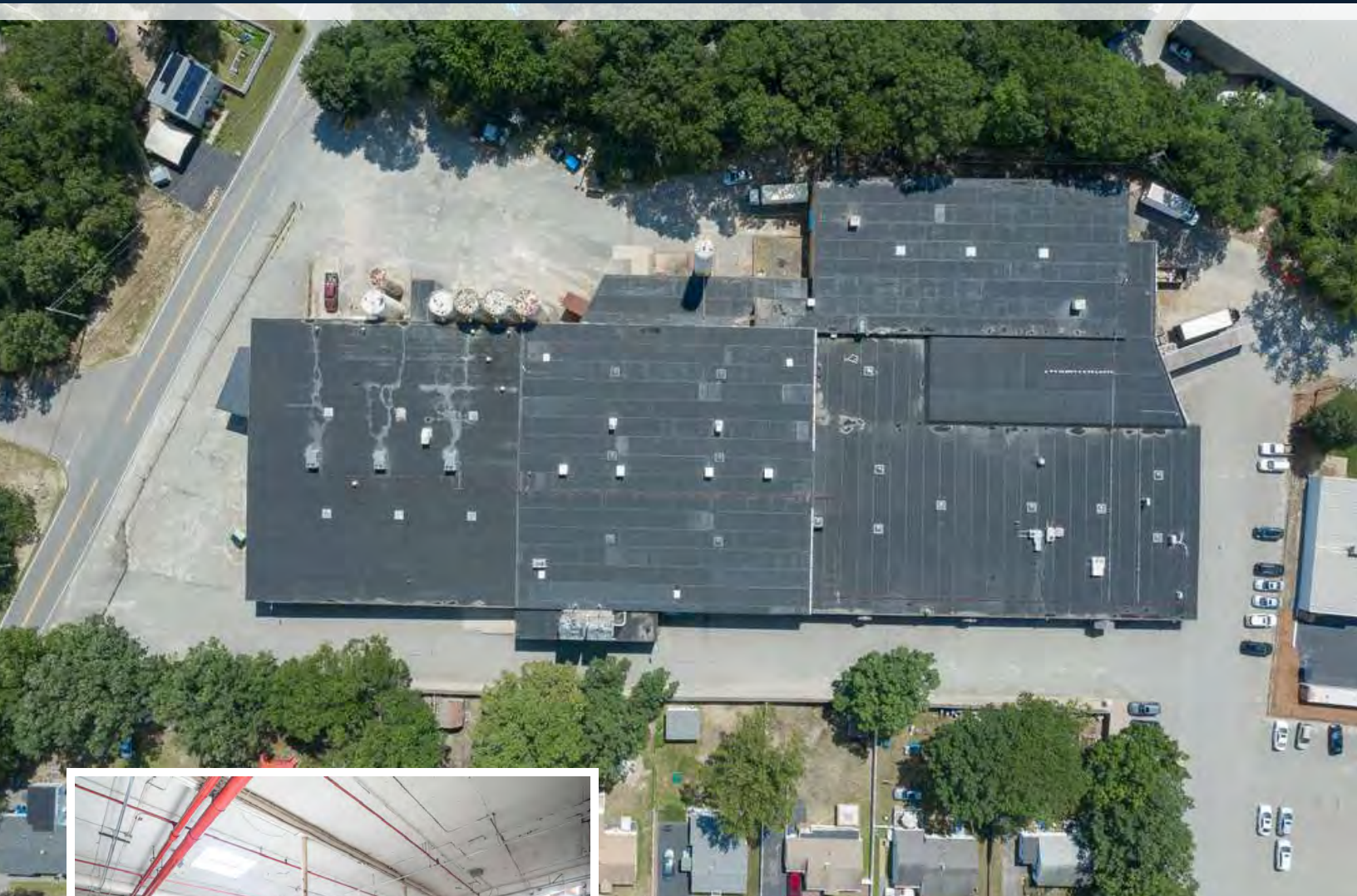
ZONING	INDUSTRIAL
LOADING	TAILBOARD DOCK
HEIGHT	12' CLEAR
SPRINKLER	WET
POWER	7,000 AMPS, 13,800 V/ 480,3 PHASE
CONSTRUCTION	CONCRETE / BLOCK
ROOF	TAR AND GRAVEL/ RUBBER
HEAT	GAS/ELECTRIC

LOCATION MAPS



177 FLORENCE STREET

LEOMINSTER, MA



CONTACT:

ALAN RINGUETTE

978.265.8112

ALAN@STUBBLEBINECOMPANY.COM

JAMES STUBBLEBINE

617.592.3388

JAMES@STUBBLEBINECOMPANY.COM

DAVID STUBBLEBINE

617.592.3391

DAVID@STUBBLEBINECOMPANY.COM

EXCLUSIVE OFFERING



THE
STUBBLEBINE
COMPANY

CORFAC INTERNATIONAL