



# 7 CROW'S NEST CIRCLE

MERRIMACK, NH

360,000 SF | 36' CLEAR | NEW CONSTRUCTION

JAMES STUBBLEBINE  
DAVID STUBBLEBINE  
AARON SMITH

617.592.3388  
617.592.3391  
978.654.0432

[james@stubblebinecompany.com](mailto:james@stubblebinecompany.com)  
[david@stubblebinecompany.com](mailto:david@stubblebinecompany.com)  
[asmith@stubblebinecompany.com](mailto:asmith@stubblebinecompany.com)



THE  
STUBBLEBINE  
COMPANY

CORFAC INTERNATIONAL

# PROPERTY SUMMARY

## PROPERTY DESCRIPTION

360,000 SF Industrial Building

## PROPERTY HIGHLIGHTS

- Class A Industrial Building
- Located 3 minutes off of Route 3
- Accessible by Exit 7E and 10 off of Route 3
- Under Construction

## CONSTRUCTION TIMELINE

- Phase 1 - 40,000 SF Available in October 2024  
Under Construction  
60,000 SF Leased  
40,000 SF Available October 2024
- Phase 2 - 260,000 SF
- Groundbreaking: Fall 2024
- Site Work: Fall 2024
- Building Structure/Envelope: Spring 2025
- Base Building Delivery: Fall 2025
- TI Delivery: Spring 2026

## PROPERTY SPECIFICATIONS

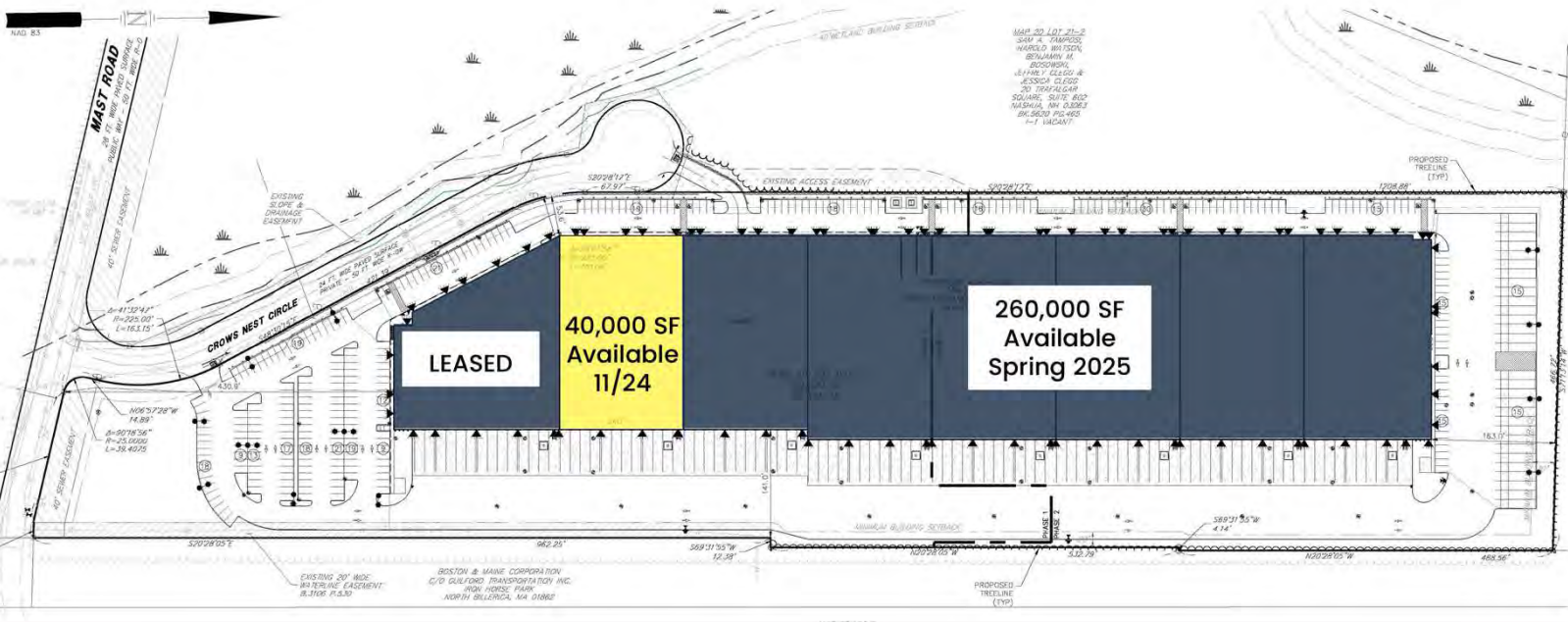
TOTAL SIZE:	359,309 SF
AVAILABLE SF 11/24: Available SF Spring 2026:	40,000 +/- SF 260,000 +/- SF
LOT SIZE:	18.34 Acres
CLEAR HEIGHT:	36' Clear height
UTILITIES:	Town Water/ Natural Gas/ Sewer (Private)
LOADING DOCKS:	96 (9'x10')
DRIVE-IN DOORS:	8 (12' x 14')
COLUMN SPACING:	54'W x 48'D, 60' Deep Speedbay
PARKING:	304 Spaces
TRAILER PARKING:	30 Spaces
SPRINKLER:	ESFR
EXTERIOR WALLS:	Precast insulated concrete panels
BUILDING DEPTH:	265'
BUILDING LENGTH:	1,350'
TRUCK COURT DEPTH:	130'
WAREHOUSE FLOOR:	8" Sealed concrete slab, 3,500 PSI
LIGHTING:	LED
COMMUNICATION:	1 GB Fiber Service
RENTAL RATE:	MARKET

# ADDITIONAL RENDERINGS





# SITE PLAN



AERIAL

**VIRTEX**

MERRIMACK  
PREMIUM  
OUTLETS®  
*Shop Brilliantly.*

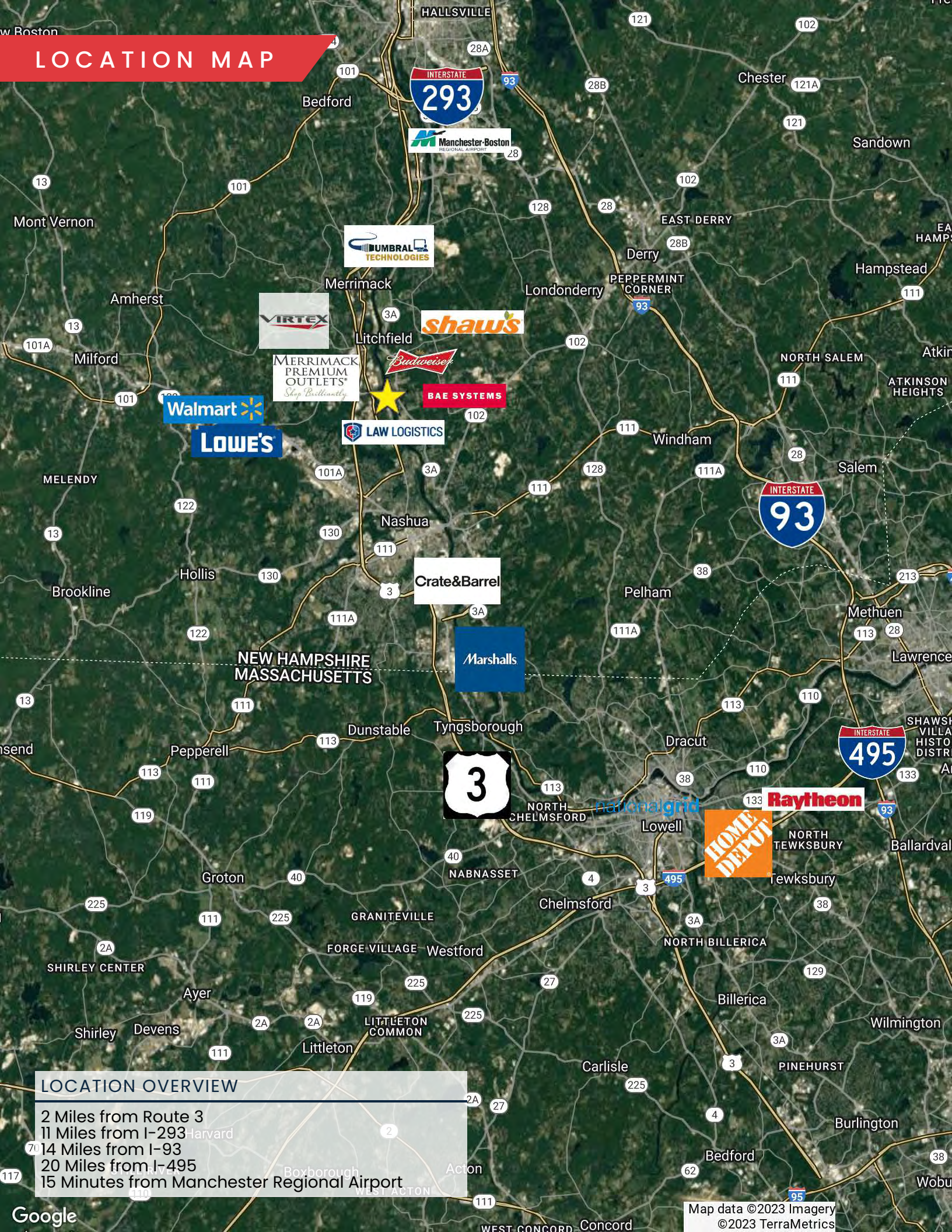
**Elbit Systems™**

*Budweiser*

**BAE SYSTEMS**

**CSX**

# LOCATION MAP



## LOCATION OVERVIEW

- 2 Miles from Route 3
- 11 Miles from I-293 Harvard
- 14 Miles from I-93
- 20 Miles from I-495
- 15 Minutes from Manchester Regional Airport

LOCAL MAP

EXIT 10



BAE SYSTEMS

SITE



EXIT 7E

Everett Turnpike

Merrimack River

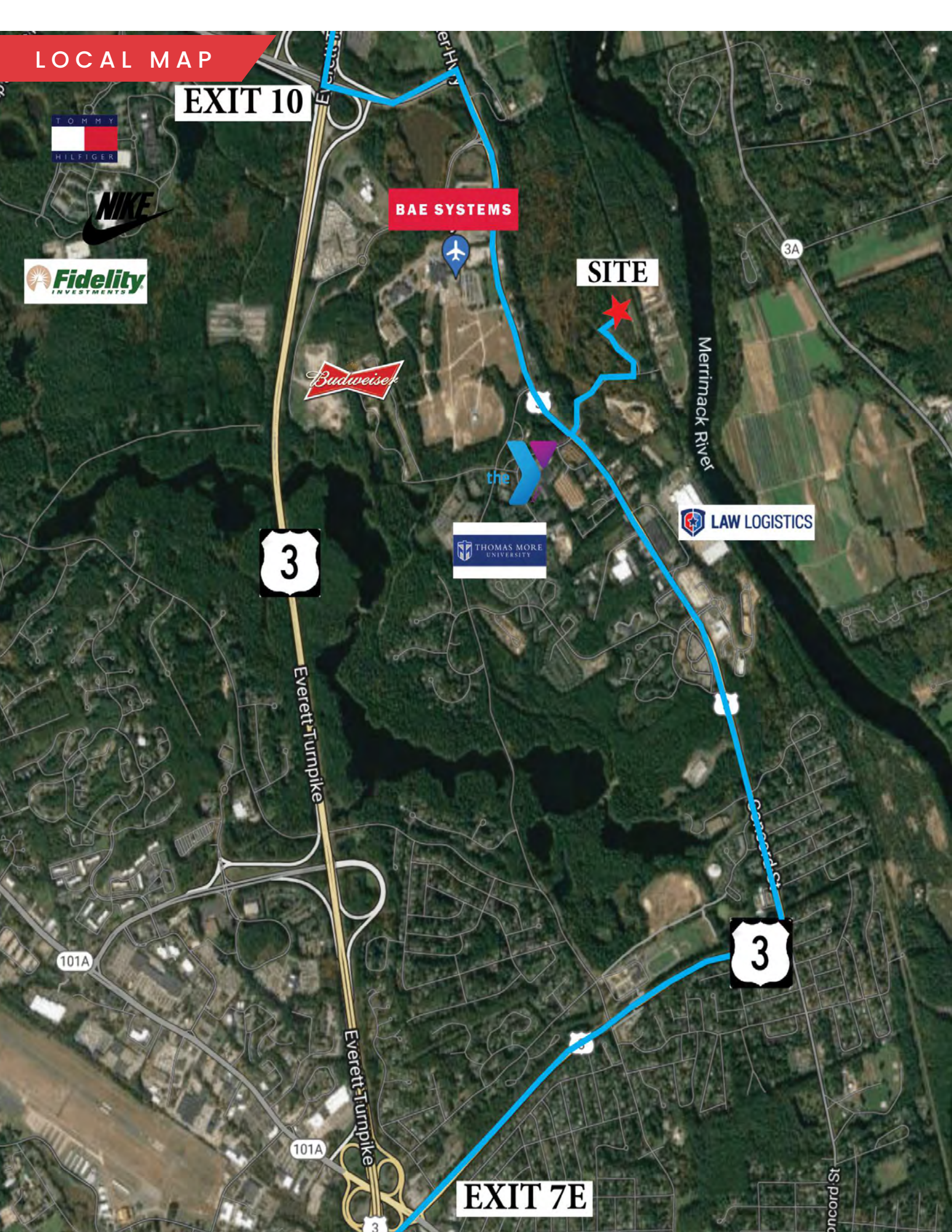
3A

101A

101A

Everett Turnpike

St. Concord





# 7 CROW'S NEST CIRCLE

MERRIMACK, NH

300,000 SF AVAILABLE | FOR LEASE

**JAMES STUBBLEBINE**

617.592.3388

[james@stubblebinecompany.com](mailto:james@stubblebinecompany.com)

**DAVID STUBBLEBINE**

617.592.3391

[david@stubblebinecompany.com](mailto:david@stubblebinecompany.com)

**AARON SMITH**

978.654.0432

[asmith@stubblebinecompany.com](mailto:asmith@stubblebinecompany.com)

We obtained the information above from sources we believe to be reliable. However, we have not verified its accuracy and make no guarantee, warranty or representation about it. It is submitted subject to the possibility of errors, omissions, change of price, rental or other conditions, prior sale, lease or financing, or withdrawal without notice. We include projections, opinions, assumptions or estimates for example only, and they may not represent current or future performance of the property. You and your tax and legal advisors should conduct your own investigation of the property and transaction.



THE  
STUBBLEBINE  
COMPANY

CORFAC INTERNATIONAL