



100 SIMPLEX DRIVE

WESTMINSTER, MA

142,793 SF | WORLD-CLASS DISTRIBUTION BUILDING FOR LEASE

- PROMINENT ROUTE 2 VISIBILITY
- INSTITUTIONAL QUALITY ASSET SITUATED ON A 95 ACRE PRISTINE CAMPUS
- 26' CLEAR HEIGHT
- HEAVY POWER
- 142,793 SF: SUBDIVIDABLE TO 75,817 SF AND 66,976 SF



THE
STUBBLEBINE
COMPANY

CORFAC INTERNATIONAL

PROPERTY SUMMARY



PROPERTY DESCRIPTION

142,793 SF WORLD-CLASS 26' CLEAR DISTRIBUTION BUILDING FOR LEASE

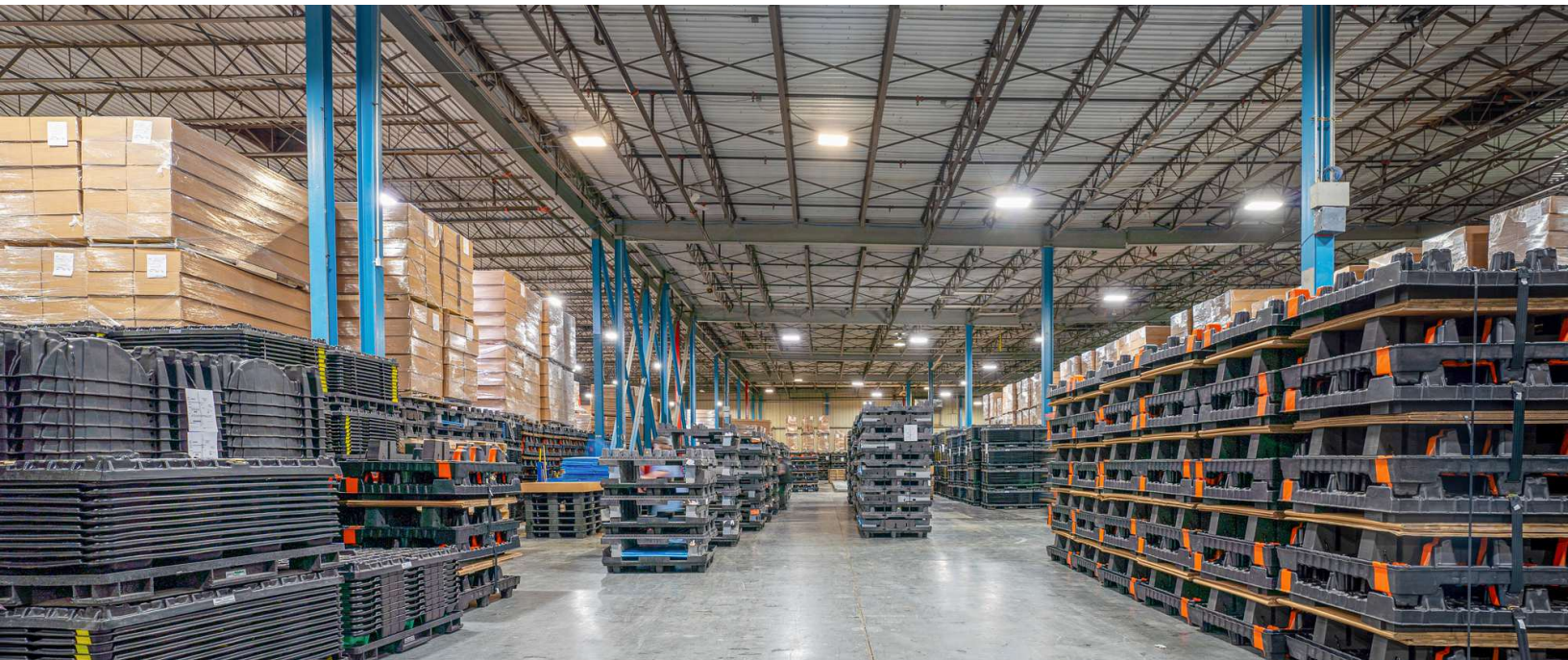
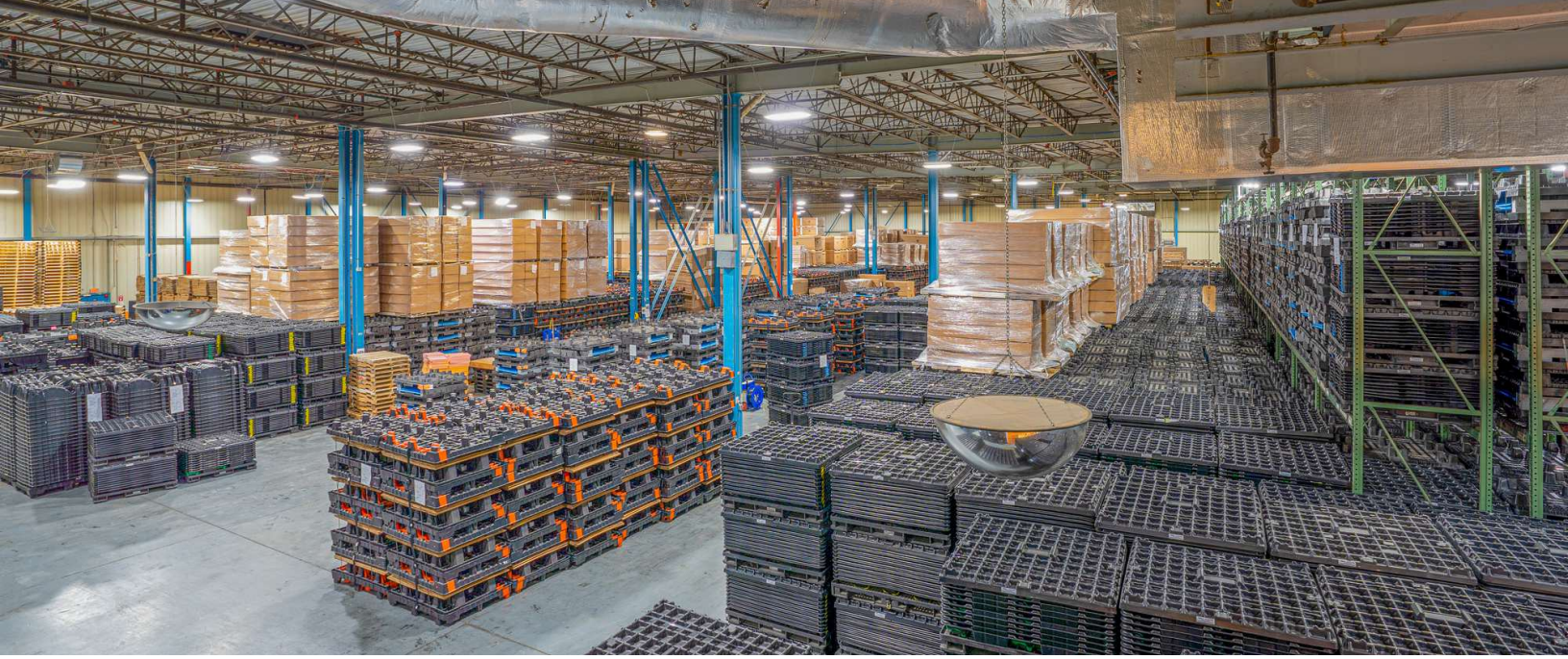
DEMOGRAPHICS	25 MILES	50 MILES	100 MILES
Total Households	334,442	2,321,008	5,366,856
Total Population	818,441	5,705,218	12,402,038
Average HH Income	\$97,383	\$109,986	\$97,238

SPECIFICATIONS

Complex Size:	692,305 SF
Available Space:	142,793 SF: subdivides to 75,817 SF: 68,429 SF (warehouse) and 7,014 SF (office) + 374 SF 66,976 SF: 57,482 SF (warehouse) and 9,494 SF (office)
Land Area:	95 Acres
Zoning:	Industrial
Parking:	On-site for 1,593 cars
Loading:	66,976 SF Space - 6 Tailboard 75,817 SF Space - 7 Tailboard
Ceiling Height:	26' Clear
Power:	4,000 amps

Utilities:	All utilities including sewer
Heat:	Central boiler room with gas/oil fired hot water system feeding individual multi-zoned air handlers
A/C:	HVAC'd space: 75,817 SF: 68,429 SF (warehouse) + 7,388 SF (office) Non HVAC'd space: 66,976 SF: 57,482 SF (warehouse) + 9,494 SF (office)
Sprinklers:	100% Wet System
Construction:	Masonry with insulated metal panels
Lighting:	LED
Rental Rate:	Market

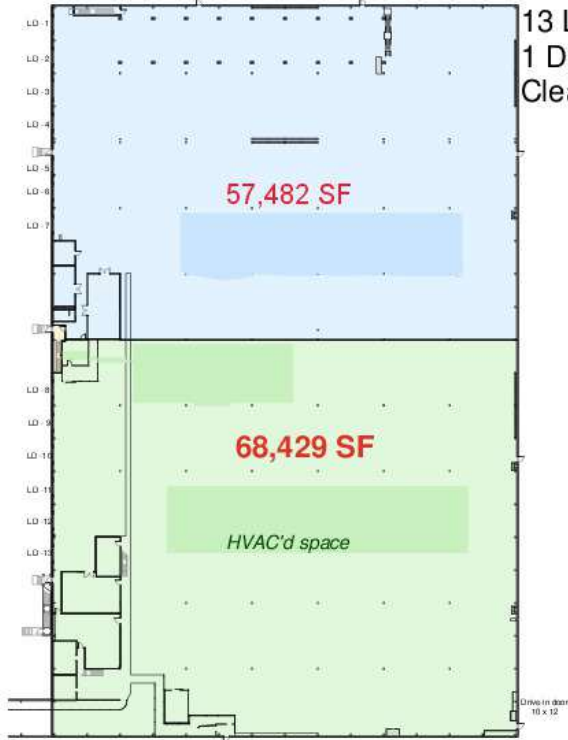




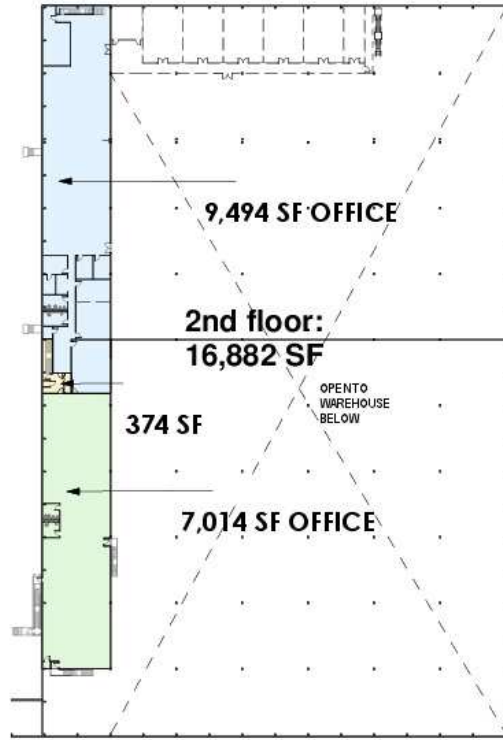
FLOOR PLANS

TOTAL SF = 142,793

13 Loading docks
1 Drive-in
Clear height = 26'



① 01 LEVEL 1 AFTER DEMISING
CONDITIONS
1" = 60'-0"



② 02 LEVEL 2 MEZZ AFTER DEMISING
CONDITIONS
1" = 60'-0"

Ebbrell 100 SIMPLEX DEMISING
ARCHITECTURE - DESIGN
100 Simplex Drive
Westminster, MA

No.	Description	Date

EXISTING CONDITIONS AFTER DEMISING

Project number	#
Date	March 2024
Scale	1" = 60'-0"

X1.0



100 SIMPLEX DRIVE

WESTMINSTER, MA

142,793 SF | WORLD-CLASS DISTRIBUTION BUILDING FOR LEASE

DAVID STUBBLEBINE

617.592.3391

david@stubblebinecompany.com

JAMES STUBBLEBINE

617.592.3388

james@stubblebinecompany.com

ALAN RINGUETTE

978.265.8112

alan@stubblebinecompany.com

JUSTIN HOPKINS

808.321.8000

Justin@stubblebinecompany.com

We obtained the information above from sources we believe to be reliable. However, we have not verified its accuracy and make no guarantee, warranty or representation about it. It is submitted subject to the possibility of errors, omissions, change of price, rental or other conditions, prior sale, lease or financing, or withdrawal without notice. We include projections, opinions, assumptions or estimates for example only, and they may not represent current or future performance of the property. You and your tax and legal advisors should conduct your own investigation of the property and transaction.



**THE
STUBBLEBINE
COMPANY**

CORFAC INTERNATIONAL