



547 AMHERST ST

NASHUA, NH

FOR LEASE | 35,684 SF CLASS A OFFICE BUILDING

AARON SMITH
DAVID STUBBLEBINE
JAMES STUBBLEBINE

978.654.0432
617.592.3391
617.592.3388

asmith@stubblebinecompany.com
david@stubblebinecompany.com
james@stubblebinecompany.com



THE
STUBBLEBINE
COMPANY

CORFAC INTERNATIONAL

PROPERTY SUMMARY



PROPERTY DESCRIPTION

Class A 35,684 SF Office Building on 1.55 Acres for Lease

PROPERTY HIGHLIGHTS

- 2.1 Miles from Route 3
- 1.7 Miles from Route 101A
- 400' of frontage on Amherst St.
- Ample on-site parking
- Numerous nearby amenities including hotels and restaurants

OFFERING SUMMARY

Building Size:	35,684
Available SF:	7,184 SF
Lot Size:	1.55 AC
Number of Units:	23
Construction:	Steel
Sprinklers:	Wet
Elevators:	1
Parking Ratio:	3.85
Lease Rate:	Negotiable

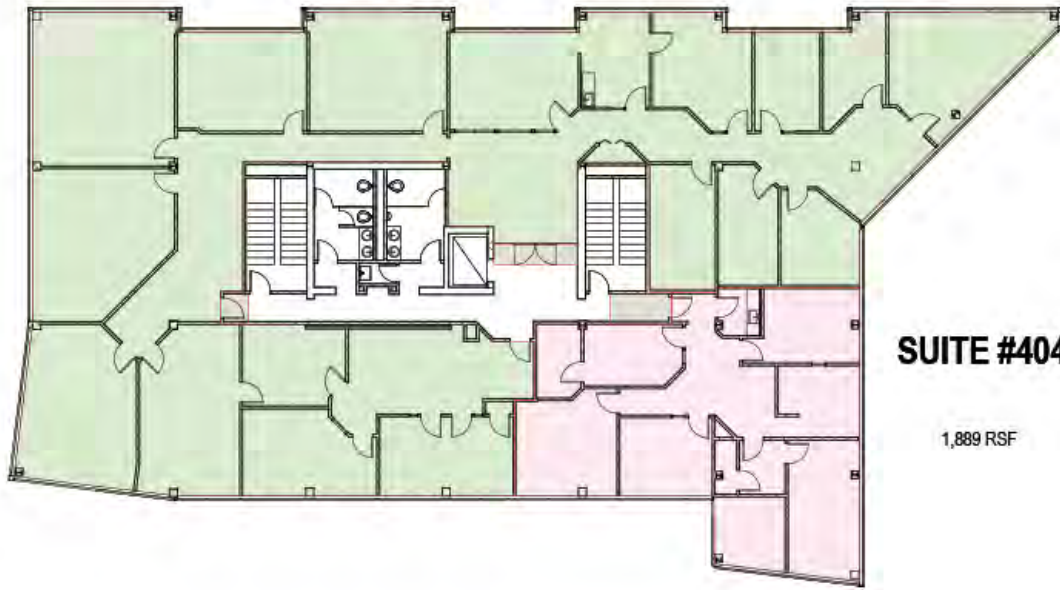
DEMOGRAPHICS	0.3 MILES	0.5 MILES	1 MILE
Total Households	210	756	1,545
Total Population	435	1,593	3,320
Average HH Income	\$105,152	\$108,133	\$120,264

ADDITIONAL PHOTOS



**SUITE #400
VACANT**

7,184 SF



SUITE #404

1,889 RSF

FOURTH FLOOR



547 Amherst Drive, Nashua, NH

Project number	#
Date	May 2020
Scale	3/64" = 1'-0"

XM.400

LOCATION MAP



547 AMHERST ST NASHUA, NH

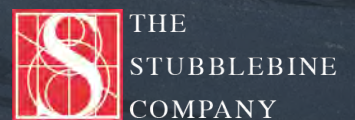
FOR LEASE | 35,684 SF CLASS A OFFICE BUILDING

AARON SMITH
978.654.0432
asmith@stubblebinecompany.com

DAVID STUBBLEBINE
617.592.3391
david@stubblebinecompany.com

JAMES STUBBLEBINE
617.592.3388
james@stubblebinecompany.com

We obtained the information above from sources we believe to be reliable. However, we have not verified its accuracy and make no guarantee, warranty or representation about it. It is submitted subject to the possibility of errors, omissions, change of price, rental or other conditions, prior sale, lease or financing, or withdrawal without notice. We include projections, opinions, assumptions or estimates for example only, and they may not represent current or future performance of the property. You and your tax and legal advisors should conduct your own investigation of the property and transaction.



CORFAC INTERNATIONAL