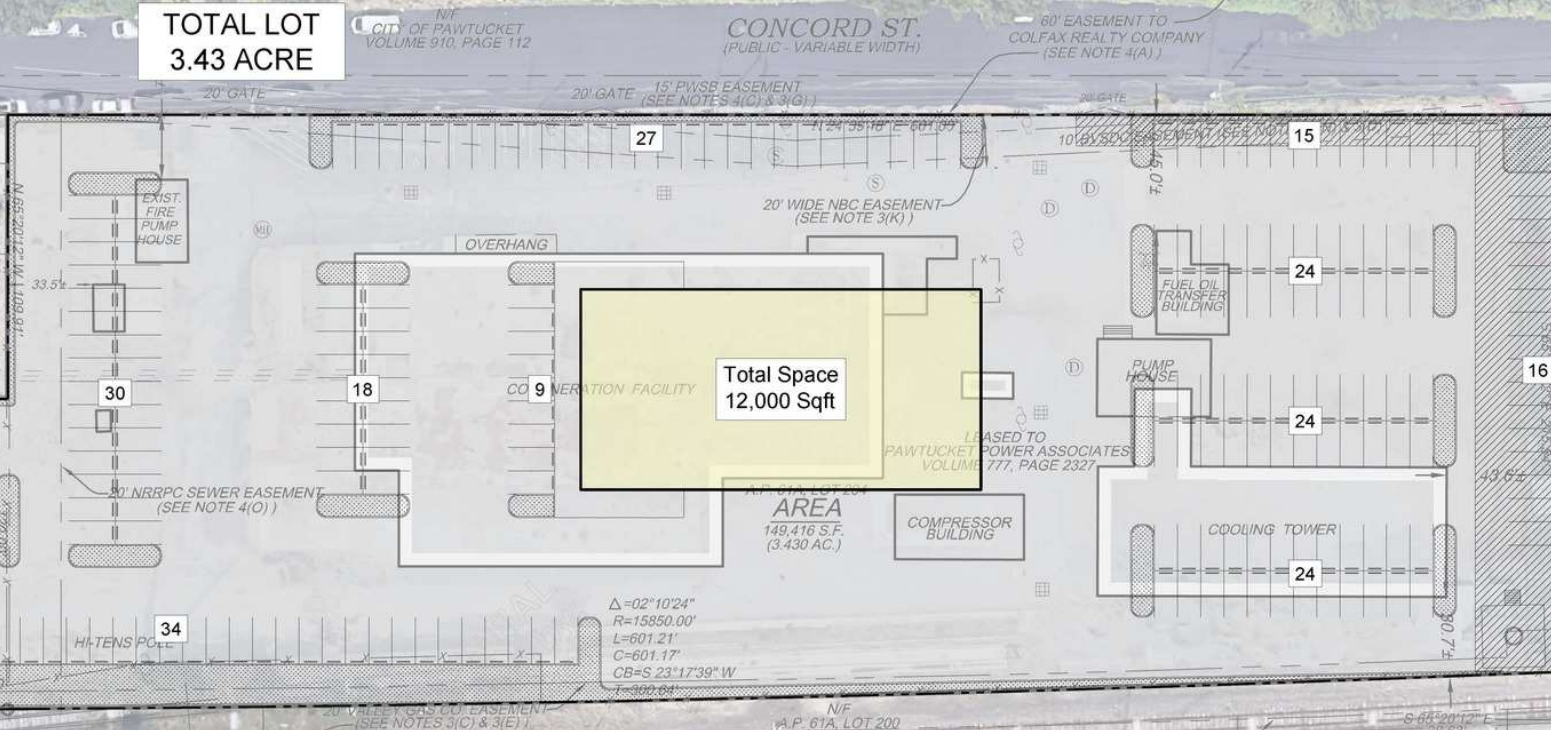




**TOTAL LOT  
3.43 ACRE**



# 181 CONCORD ST

**PAWTUCKET, RI**

**FOR LEASE | 3.5 AC OF LAND**

**JAMES STUBBLEBINE**  
**STEPHEN FLYNN**  
**MATTY DROUILLARD**  
**DAVID STUBBLEBINE**

**617.592.3388**  
**781.917.7026**  
**425.691.7881**  
**617.592.3391**

**james@stubblebinecompany.com**  
**sflynn@stubblebinecompany.com**  
**matty@stubblebinecompany.com**  
**david@stubblebinecompany.com**

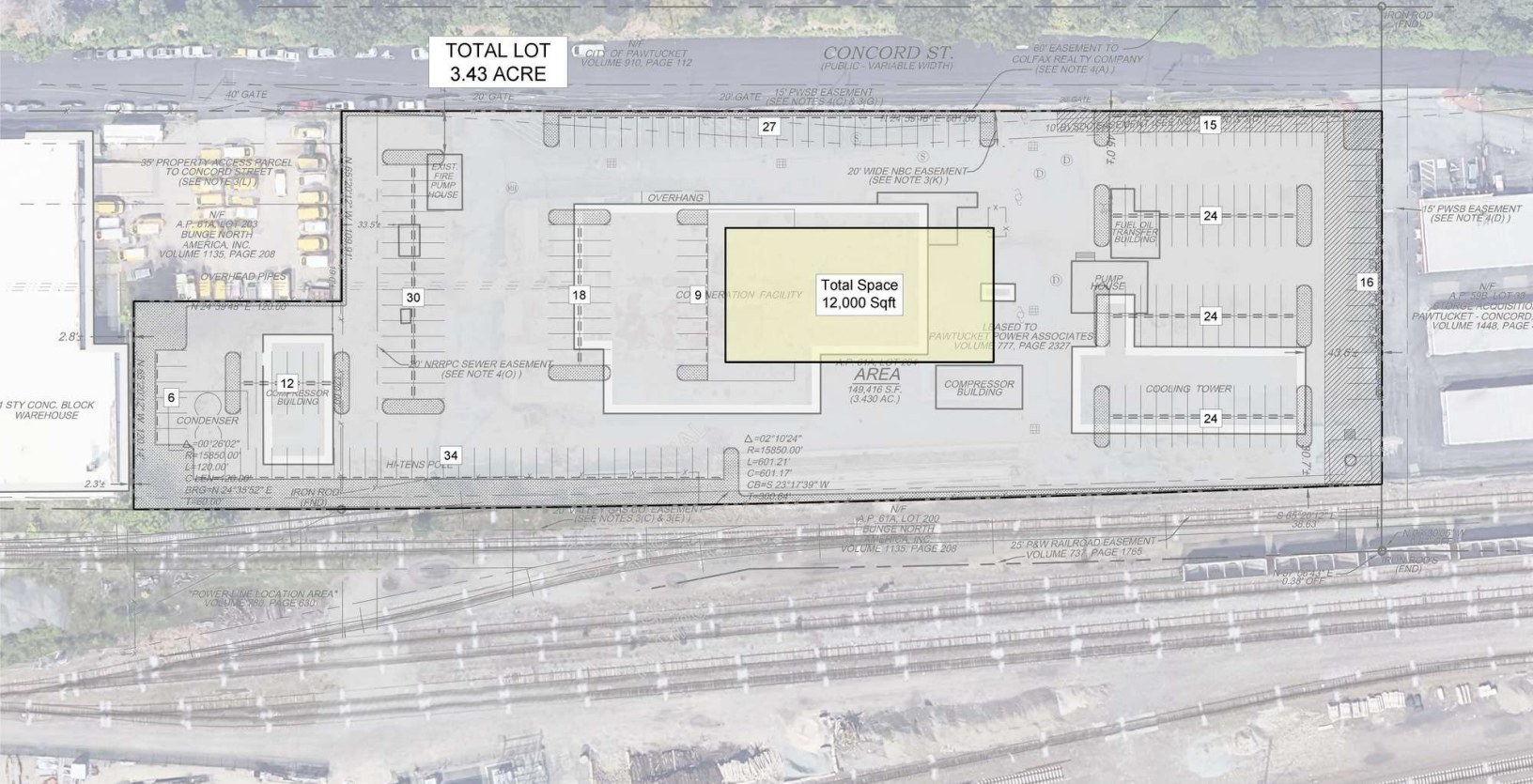


**THE  
STUBBLEBINE  
COMPANY**

**CORFAC INTERNATIONAL**



# PROPERTY SUMMARY



## PROPERTY DESCRIPTION

3.5 AC of Land for Lease

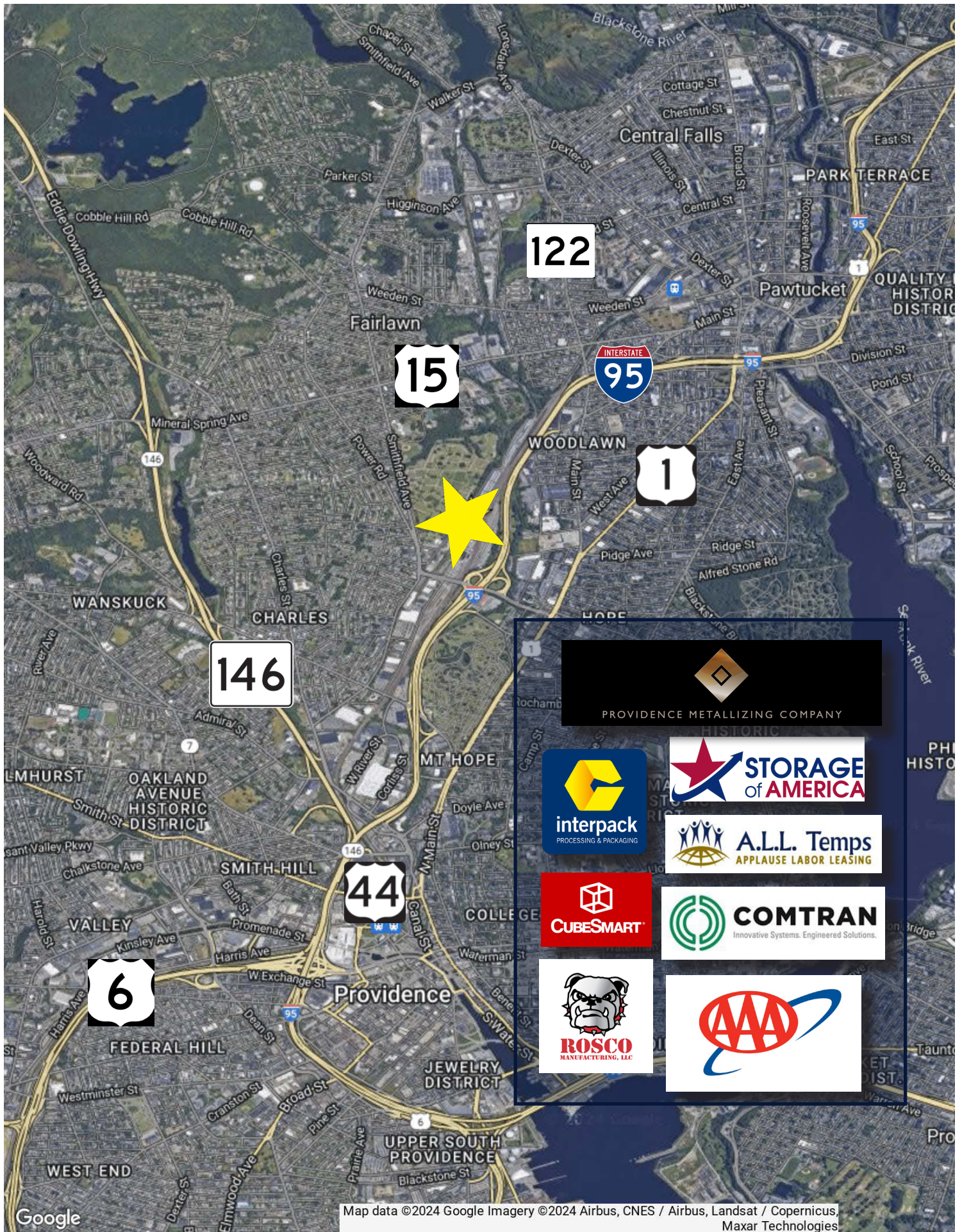
## PROPERTY HIGHLIGHTS

## PROPERTY SPECIFICATIONS

Available SF:	12,000 SF
Lot Size:	3.43 AC
Lease Rate:	Market

DEMOGRAPHICS	3 MILES	5 MILES	10 MILES
Total Households	82,294	158,080	291,969
Total Population	206,022	401,094	735,793
Average HH Income	\$98,340	\$93,836	\$104,927





122

15

INTERSTATE 95

1

146

44

6

PROVIDENCE METALLIZING COMPANY

interpack  
PROCESSING & PACKAGING

STORAGE of AMERICA

A.L.L. Temps  
APPLAUSE LABOR LEASING

CUBESMART

COMTRAN  
Innovative Systems. Engineered Solutions.

ROSCO  
MANUFACTURING, LLC





TOTAL LOT  
3.43 ACRES

# 181 CONCORD ST

PAWTUCKET, RI

FOR LEASE | 3.5 AC OF LAND

18

**JAMES STUBBLEBINE**  
617.592.3388  
james@stubblebinecompany.com

Total Space  
12,000 Sqft

**STEPHEN FLYNN**  
781.917.7026  
sflynn@stubblebinecompany.com

AREA  
149,416 S.F.  
(3.430 AC.)

34

**MATTY DROUILLARD**  
425.691.7881  
matty@stubblebinecompany.com

**DAVID STUBBLEBINE**  
617.592.3391  
david@stubblebinecompany.com

We obtained the information above from sources we believe to be reliable. However, we have not verified its accuracy and make no guarantee, warranty or representation about it. It is submitted subject to the possibility of errors, omissions, change of price, rental or other conditions, prior sale, lease or financing, or withdrawal without notice. We include projections, opinions, assumptions or estimates for example only, and they may not represent current or future performance of the property. You and your tax and legal advisors should conduct your own investigation of the property and transaction.



CORFAC INTERNATIONAL