



# 454 SOUTH ST WEST

RAYNHAM, MA

FOR SALE | 2.52 AC LAND SITE WITH IMMEDIATE ACCESS TO RT. 24/44

STEPHEN FLYNN 781.917.7026 sflynn@stubblebinecompany.com  
MATTY DROUILLARD 425.691.7881 matty@stubblebinecompany.com

 THE  
STUBBLEBINE  
COMPANY  
CORFAC INTERNATIONAL

# PROPERTY SUMMARY



## PROPERTY DESCRIPTION

2.52 AC Land Site for Sale  
Permitted for 8,104 SF Contractor Bay Building

## PROPERTY HIGHLIGHTS

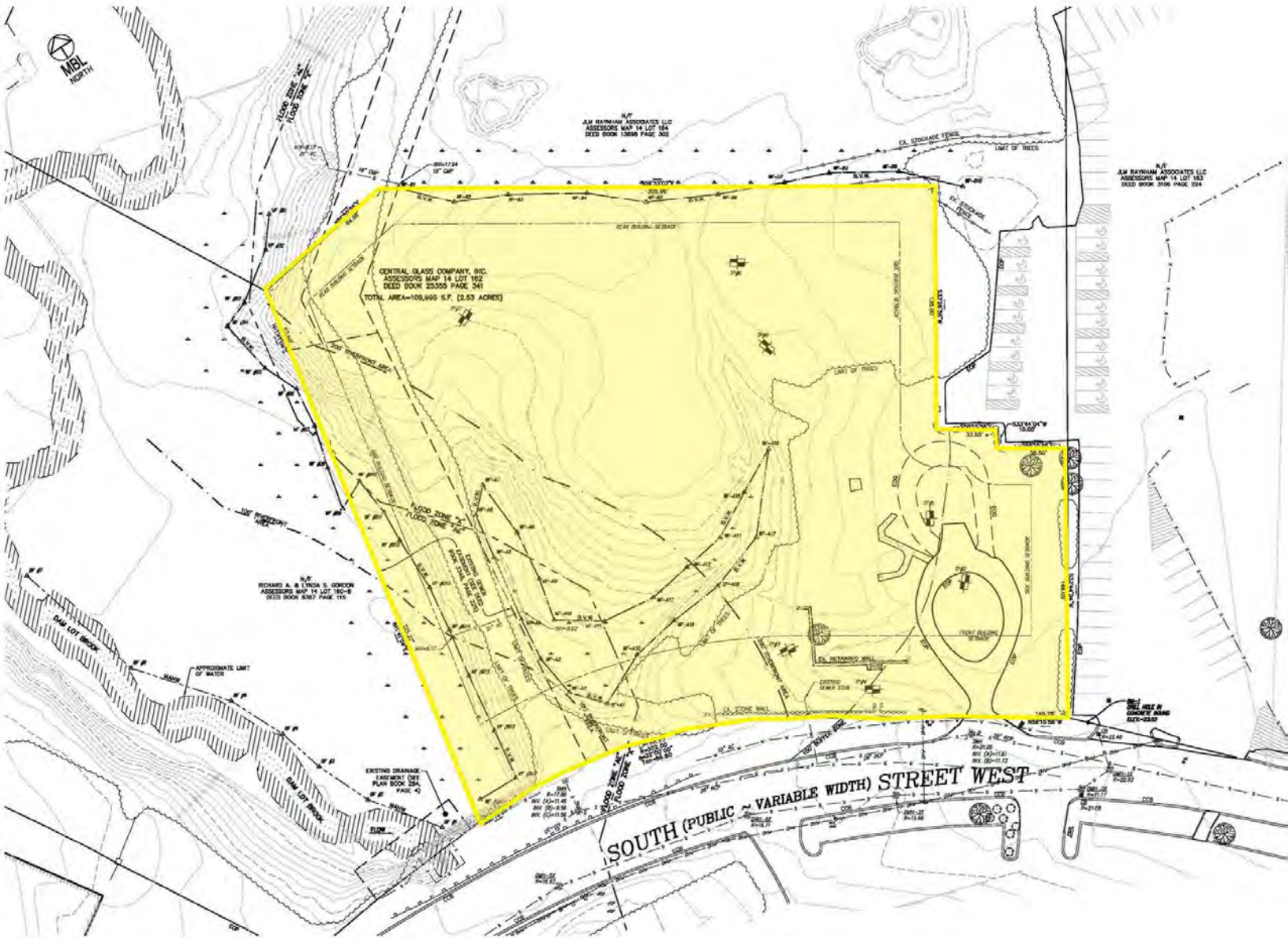
- 0.1 Miles to Route 44
- 0.3 Miles to Route 24

## PROPERTY SPECIFICATIONS

Lot Size:	2.52 AC
Zoning:	Business
Sale Price:	Market

DEMOGRAPHICS	3 MILES	5 MILES	10 MILES
Total Households	17,790	32,046	81,022
Total Population	44,569	82,784	221,094
Average HH Income	\$100,472	\$110,944	\$127,922

# SITE PLAN



 **Sunrise Technologies**  
An Affiliate of ELECTRO SWITCH CORP



 **SRGI**  
Solution Partners You Can Trust

 **ELECTROCHEM**  
AN ELECTRO SWITCH COMPANY

 **CET Group**

 **ExtraSpace Storage**

 **Lineage**

 **PRIME STORAGE**

 **alphabroder**

 **AMETEK**

24

44

140





# 454 SOUTH ST W

RAYNHAM, MA

FOR SALE | 2.52 AC LAND SITE WITH IMMEDIATE ACCESS TO RT. 24/44



**STEPHEN FLYNN**  
781.917.7026  
sflynn@stubblebinecompany.com

**MATTY DROUILLARD**  
425.691.7881  
matty@stubblebinecompany.com

We obtained the information above from sources we believe to be reliable. However, we have not verified its accuracy and make no guarantee, warranty or representation about it. It is submitted subject to the possibility of errors, omissions, change of price, rental or other conditions, prior sale, lease or financing, or withdrawal without notice. We include projections, opinions, assumptions or estimates for example only, and they may not represent current or future performance of the property. You and your tax and legal advisors should conduct your own investigation of the property and transaction.



CORFAC INTERNATIONAL