



# 263 BEDFORD STREET

WHITMAN, MA

BUILD TO SUIT/FOR LEASE | 51,883 SF LOT

- Highway Business/Limited Industrial Build to Suit Opportunity
- Frontage/Signage Capabilities on Route 18
- Retail, Industrial and many more capabilities



# PROPERTY SUMMARY



## PROPERTY DESCRIPTION

51,883 SF Lot- Build to Suit/for Lease Opportunity with Frontage on Route 18

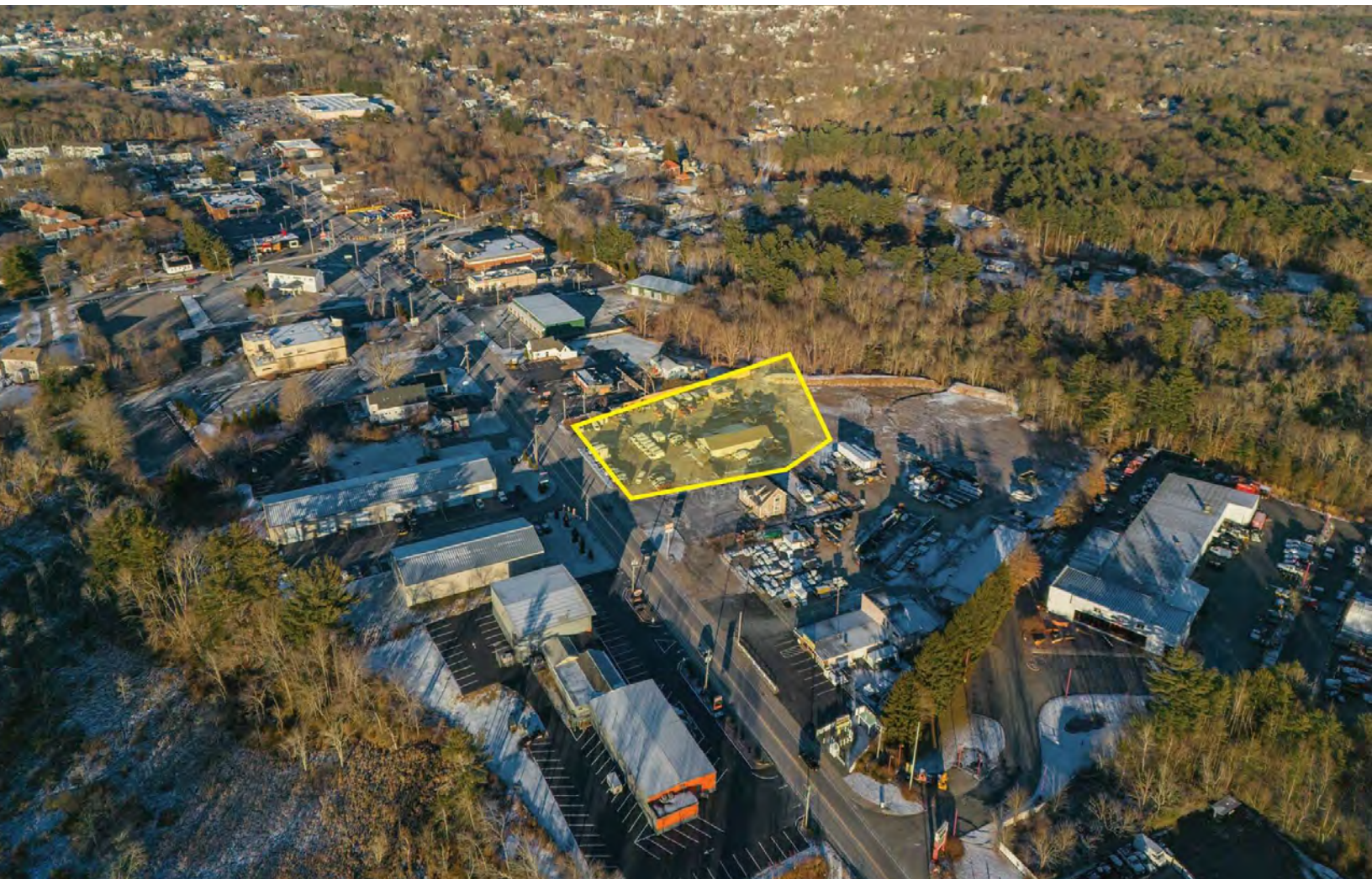
Two (2) proposed 6,250 SF Buildings totaling 12,500 SF

Construction commencement set for Spring 2025

## OFFERING SUMMARY

Proposed SF:	12,500 SF
Building Size:	Two (2) 6,250 SF
Loading:	Eight (8) 14' x 14' Drive-in doors
Lot Size:	51,883 SF
Zoning:	Highway Business/Limited Industrial
Lease Rate:	Market

DEMOGRAPHICS	3 MILES	5 MILES	10 MILES
Total Households	15,736	55,225	165,700
Total Population	44,596	158,201	456,579
Average HH Income	\$127,365	\$121,832	\$140,365





BRAINTREE HIGHLANDS

SOUTH WEYMOUTH

ACCORD

Randolph

ASSINIPPI



24

Holbrook

SOUTHFIELD

Avon

NORTH ABINGTON



Abington

Brockton DOWNTOWN

Whitman

24

AUBURNVILLE

18

Hanson

East Bridgewater

BRYANTVILLE

West Bridgewater

ELMWOOD

MONPONSETT

ALGERS CORNER

	METALS COMPANY INC. STAINLESS & SUPERIOR ALLOYS	

Bridgewater



RAYNHAM CENTER

Raynham

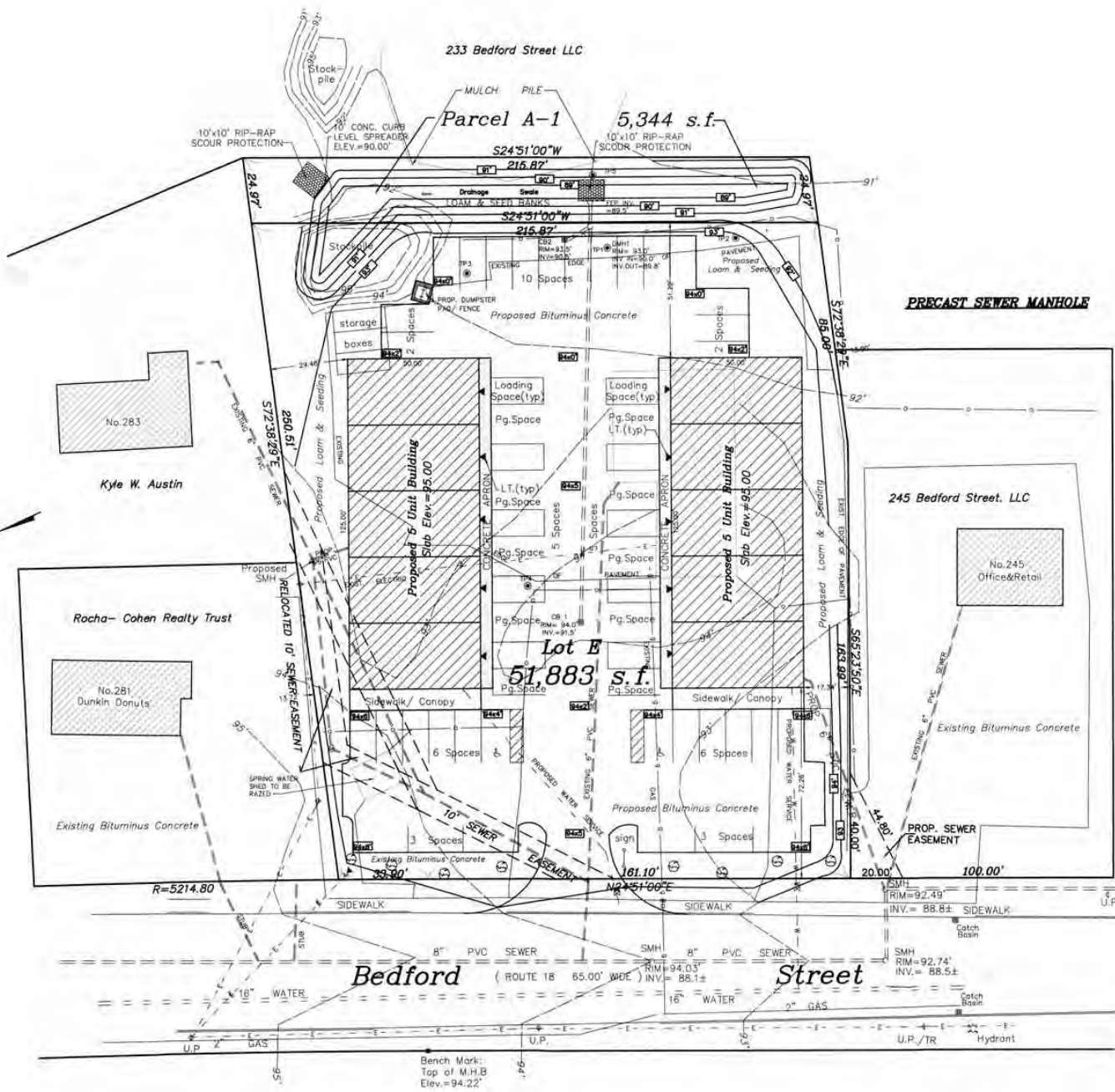
Google

Map data ©2024 Imagery ©2024 TerraMetrics

44

NOR

# SITE PLAN



# 263 BEDFORD STREET

WHITMAN, MA

BUILD TO SUIT/FOR LEASE | 51,883 SF LOT

STEPHEN FLYNN

781.917.7026

[sflynn@stubblebinecompany.com](mailto:sflynn@stubblebinecompany.com)

MATTY DROUILLARD

425.691.7881

[matty@stubblebinecompany.com](mailto:matty@stubblebinecompany.com)

We obtained the information above from sources we believe to be reliable. However, we have not verified its accuracy and make no guarantee, warranty or representation about it. It is submitted subject to the possibility of errors, omissions, change of price, rental or other conditions, prior sale, lease or financing, or withdrawal without notice. We include projections, opinions, assumptions or estimates for example only, and they may not represent current or future performance of the property. You and your tax and legal advisors should conduct your own investigation of the property and transaction.



THE  
STUBBLEBINE  
COMPANY

CORFAC INTERNATIONAL