



# 263 BEDFORD STREET

WHITMAN, MA

FOR LEASE | TWO 6,250 SF CONTRACTOR-BAY BUILDINGS

- 51,883 SF Lot with plan and permits for two 6,250 SF Buildings
- Two contractor-bay buildings being delivered in Fall 2025
- Frontage/signage capabilities on Route 18





# PROPERTY SUMMARY



## PROPERTY DESCRIPTION

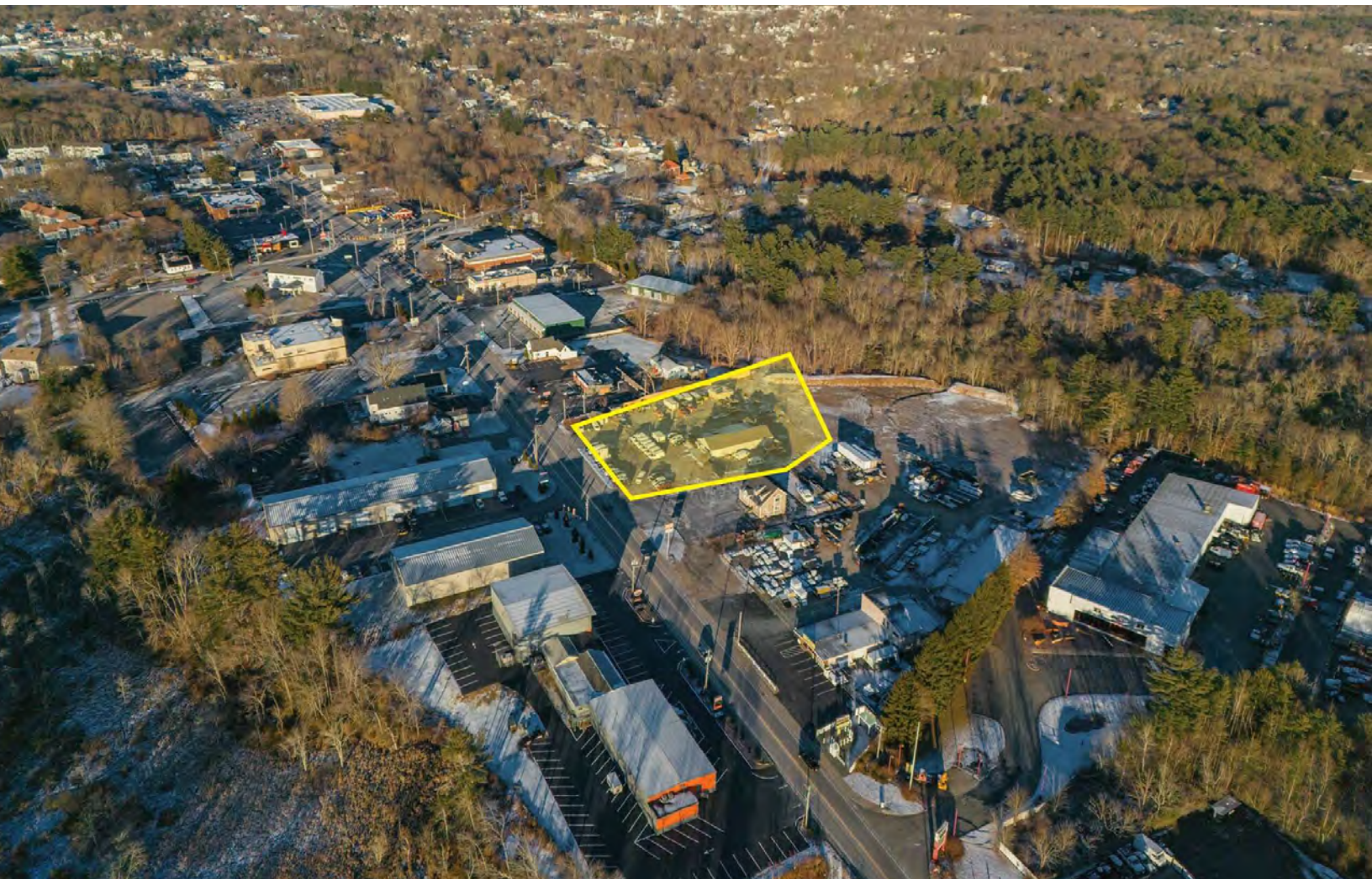
51,883 SF Lot with plans and permits for two 6,250 SF Buildings  
 Two (2) contractor-bay buildings being delivered in Fall 2025  
 Frontage/signage capabilities on Route 18  
 Industrial, Retail, and many more capabilities  
 Construction commencement set for April 2025

## OFFERING SUMMARY

Proposed SF:	12,500 SF
Building Size:	Two (2) 6,250 SF
Loading:	Eight (8) 14' x 14' Drive-in doors
Lot Size:	51,883 SF
Zoning:	Highway Business/Limited Industrial
Lease Rate:	Market

DEMOGRAPHICS	3 MILES	5 MILES	10 MILES
Total Households	15,736	55,225	165,700
Total Population	44,596	158,201	456,579
Average HH Income	\$127,365	\$121,832	\$140,365









	AAA METALS COMPANY INC. STAINLESS & SUPERIOR ALLOYS	
		
		
		
		







# 263 BEDFORD STREET

WHITMAN, MA

FOR LEASE | TWO 6,250 SF CONTRACTOR-BAY BUILDINGS

STEPHEN FLYNN

781.917.7026

[sflynn@stubblebinecompany.com](mailto:sflynn@stubblebinecompany.com)

MATTY DROUILLARD

425.691.7881

[matty@stubblebinecompany.com](mailto:matty@stubblebinecompany.com)

We obtained the information above from sources we believe to be reliable. However, we have not verified its accuracy and make no guarantee, warranty or representation about it. It is submitted subject to the possibility of errors, omissions, change of price, rental or other conditions, prior sale, lease or financing, or withdrawal without notice. We include projections, opinions, assumptions or estimates for example only, and they may not represent current or future performance of the property. You and your tax and legal advisors should conduct your own investigation of the property and transaction.



THE  
STUBBLEBINE  
COMPANY

CORFAC INTERNATIONAL