



# 89 COURT ST

PLYMOUTH, MA

**FOR SALE** | 17,055± SF ON 0.32 AC

- Located right off Route 3A
- 1 Mile from Route 3
- 2.3 Miles from Route 44
- Blocks away from historic Plymouth Rock and Mayflower Sites



THE  
STUBBLEBINE  
COMPANY

CORFAC INTERNATIONAL

PROPERTY SUMMARY



PROPERTY DESCRIPTION

17,055 SF Building on 0.32 AC for Sale

LOCATION HIGHLIGHTS

- Located right off Route 3A
- 1 Mile from Route 3
- 2.3 Miles from Route 44
- Steps away from Plymouth Harbor and Waterfront
- Blocks away from historic Plymouth Rock and Mayflower Sites

PROPERTY SPECIFICATIONS

Building Size:	17,055 SF
Lot Size:	0.32 AC
Ground Floor:	5,685 SF
Main Floor:	5,685 SF
Top Floor:	5,685 SF
Parking:	Municipal Lot
Sale Price:	\$3,175,000

DEMOGRAPHICS	3 MILES	5 MILES	10 MILES
Total Households	9,843	17,579	41,288
Total Population	23,437	43,875	105,113
Average HH Income	\$124,868	\$145,176	\$152,064

## PLYMOUTH, MA



### PROPERTY SUMMARY

Plymouth, Massachusetts, often called "America's Hometown," is a coastal town steeped in history and charm. Founded in 1620 by the Pilgrims aboard the Mayflower, it's famously home to Plymouth Rock and Plimoth Patuxet Museums, where visitors can step back into 17th-century colonial life. Beyond its historical landmarks, Plymouth offers scenic beaches, a lively waterfront, and a thriving downtown filled with local shops, seafood restaurants, and art galleries. Blending rich heritage with New England beauty, Plymouth is a quintessential destination for history buffs and seaside travelers alike.

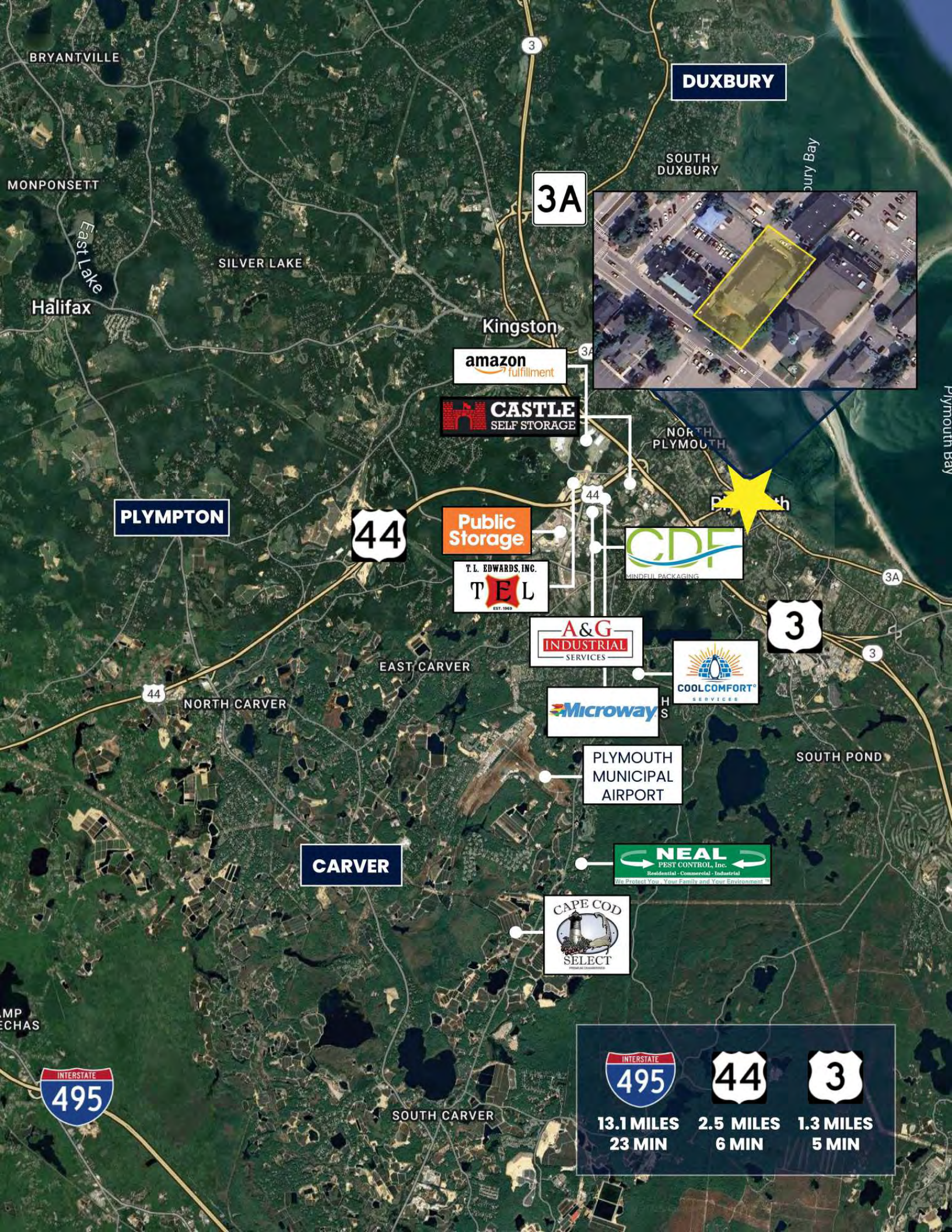
The main town streets, particularly Main Street and Court Street, are perfect for a leisurely stroll. You'll find locally owned shops, bookstores, antique stores, breweries, and sweet little bakeries—along with seasonal festivals and farmers' markets that keep the town buzzing.

At the heart of Plymouth's historical offerings is Plimoth Patuxet Museums, a living history museum where costumed interpreters reenact life in a 17th-century English village and Wampanoag homesite. Visitors can also explore the Mayflower II, a full-scale replica of the original ship that brought the Pilgrims to the New World, docked right on the picturesque waterfront. Just a short walk away, Pilgrim Hall Museum—the oldest continuously operating public museum in the U.S.—houses an extraordinary collection of original Pilgrim possessions and Native artifacts.

Art and culture thrive here too, with several galleries and studios scattered throughout downtown. The Plymouth Center for the Arts hosts rotating exhibitions, art classes, and live performances, supporting a strong local arts community. Whether you're browsing fine art, handcrafted jewelry, or photography, there's always something creative on display.







DUXBURY

3A

SOUTH DUXBURY

Plymouth Bay

SILVER LAKE

Kingston

amazon fulfillment

CASTLE SELF STORAGE



NORTH PLYMOUTH

PLYMPTON

44

Public Storage

T.L. EDWARDS, INC.  
TEL

CDF  
MINDELL PACKAGING

A&G INDUSTRIAL SERVICES

COOLCOMFORT SERVICES

3

EAST CARVER

44

NORTH CARVER

Microway

PLYMOUTH MUNICIPAL AIRPORT

SOUTH POND

CARVER

NEAL PEST CONTROL, Inc.  
Residential - Commercial - Industrial  
We Protect You - Your Family and Your Environment

CAPE COD SELECT

SOUTH CARVER

INTERSTATE 495

INTERSTATE 495

13.1 MILES  
23 MIN

44

2.5 MILES  
6 MIN

3

1.3 MILES  
5 MIN

# 89 COURT ST

PLYMOUTH, MA

**FOR SALE** | 17,055± SF ON 0.32 AC

**SUMMER STUBBLEBINE**

781.783.7903

summer@stubblebinecompany.com

**CHRIS MICHNIEWICZ**

774.994.1698

chris@stubblebinecompany.com

**DAVID STUBBLEBINE**

617.592.3391

david@stubblebinecompany.com

We obtained the information above from sources we believe to be reliable. However, we have not verified its accuracy and make no guarantee, warranty or representation about it. It is submitted subject to the possibility of errors, omissions, change of price, rental or other conditions, prior sale, lease or financing, or withdrawal without notice. We include projections, opinions, assumptions or estimates for example only, and they may not represent current or future performance of the property. You and your tax and legal advisors should conduct your own investigation of the property and transaction.



THE  
STUBBLEBINE  
COMPANY

CORFAC INTERNATIONAL